

## SEWAGE EJECTOR PUMPS

### *Iron Mac - 304011SJ*



The A.Y. McDonald Mfg. Co. Iron Mac Sewage Ejector Pump is engineered to handle the tough, demanding tasks of effluent and sewage waste transfer with high efficiency and long-term dependability. Applications include dewatering, effluent waste, wastewater and sewage handling where materials must be moved upward from a collection area to sewer or septic lines or drainage areas.

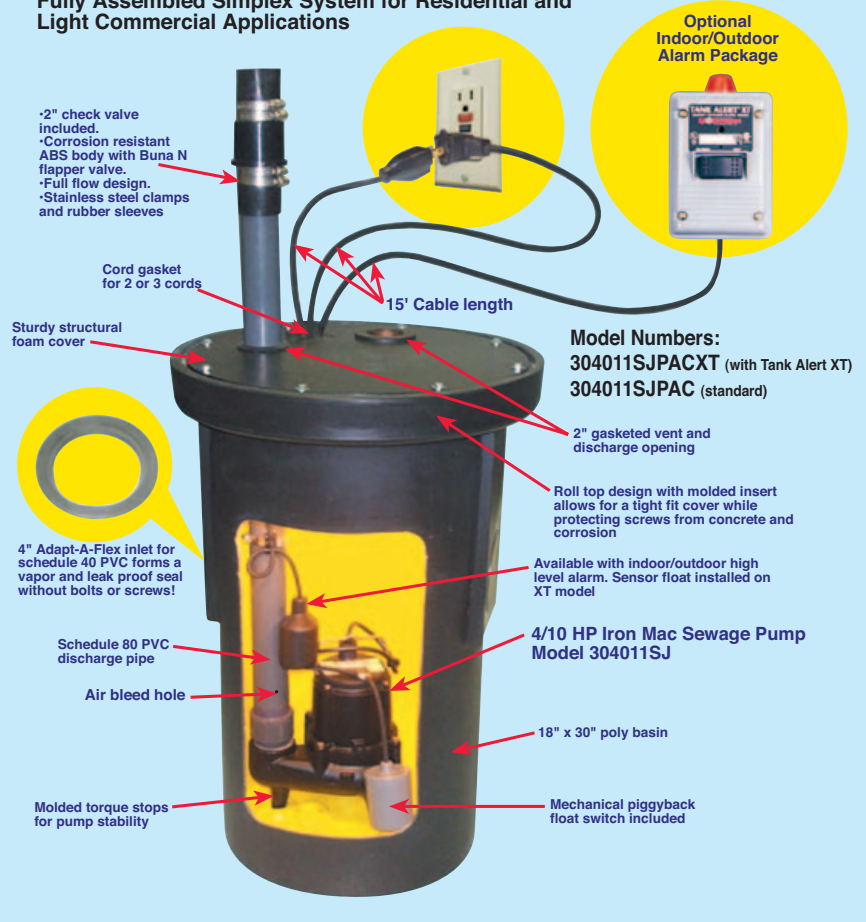


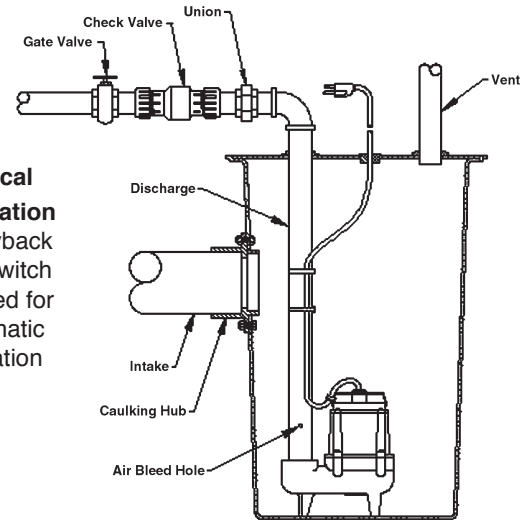
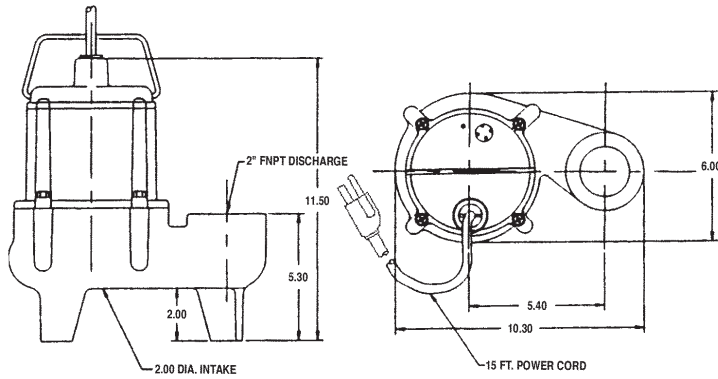
### Features

- Completely submersible
- Solids handling capability up to 2" (51mm)
- Cast iron pump housings and volutes with protective epoxy coating for corrosion and rust resistance
- Oil-filled motor housing for lifetime lubrication and rapid heat dissipation
- Mechanical-type seals (stainless steel spring, nitrile parts, carbon and ceramic face)
- Thermal overload protection

### Iron Mac Pac

Fully Assembled Simplex System for Residential and Light Commercial Applications





**Typical Installation**  
\*Piggyback float switch required for automatic operation

### Pump Specifications

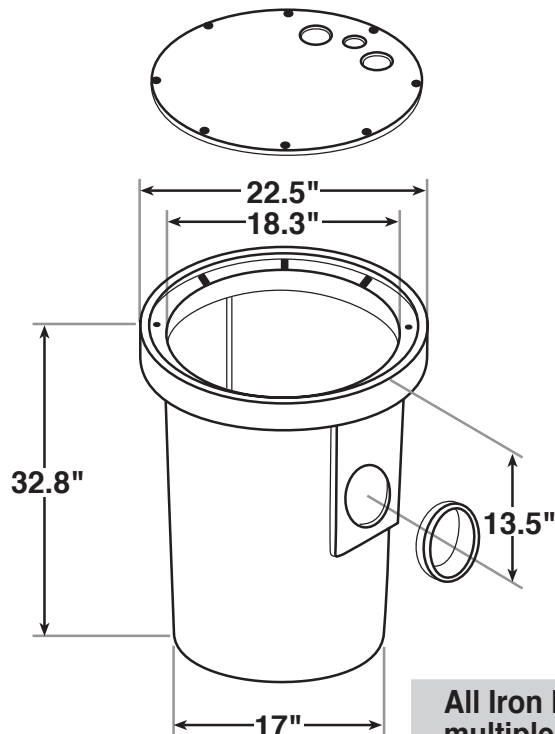
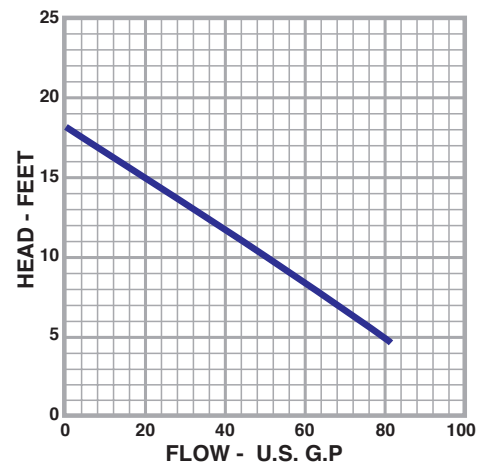
Motor ..... 4/10 HP Shaded Pole  
Solids handling (dia) ..... 2"  
Intermittent Liquid Temp. to ... 140°F  
Discharge ..... 2" FNPT  
Housing ..... Epoxy coated cast iron  
Cover ..... Nylon  
Volute ..... Epoxy coated cast iron

Impeller ..... Vortex nylon  
Shaft Seal ..... Carbon/Ceramic  
Bearings  
Upper ..... Sintered sleeve bearings  
Lower ..... Ball bearings  
Operation ..... Manual

Performance Model 304011SJ	GPM @ HEAD			SHUT OFF	PSI	MAX FLOW
	5'	10'	15'			
	80	50	16	18	7.8	80 GPM@5'

MODEL	HP	VOLTAGE	PHASE	HZ	RPM	AMPS START	AMPS RUN	WATTS	CORD LENGTH	MOLDED PLUG
304011SJ	4/10	115	1	60	1750	18.0	12.3	1000	15'	Y

•Recommended accessory - 6190-013 piggyback mechanical float switch 15' with mounting strap



## Iron Mac Pac

### MODELS AVAILABLE

	304011SJ PAC	304011SJ PACXT
<b>Pump</b>	304011SJ	304011SJ
<b>Pump Float Switch</b>	Installed	Installed
<b>Basin</b>	18" x 30" Poly	18" x 30" Poly
<b>Capacity</b>	30 gal.	30 gal.
<b>Wall Thickness</b>	0.250"	0.250"
<b>Cover</b>	Simplex Structural Foam	Simplex Structural Foam
<b>Discharge</b>	2" Installed	2" Installed
<b>Alarm</b>	No	Yes
<b>Weight</b>	56 lbs.	61 lbs.

All Iron Mac packages MUST BE ordered in multiples of 4 for shipping purposes.