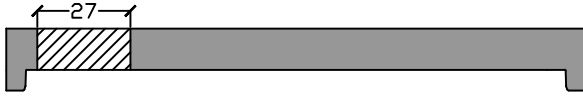


Side View

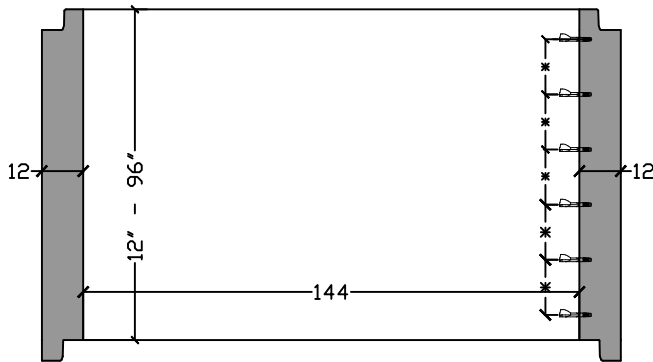
Custom access openings or cast-in hatches available.

For complete design and product information, contact Barger Precast.

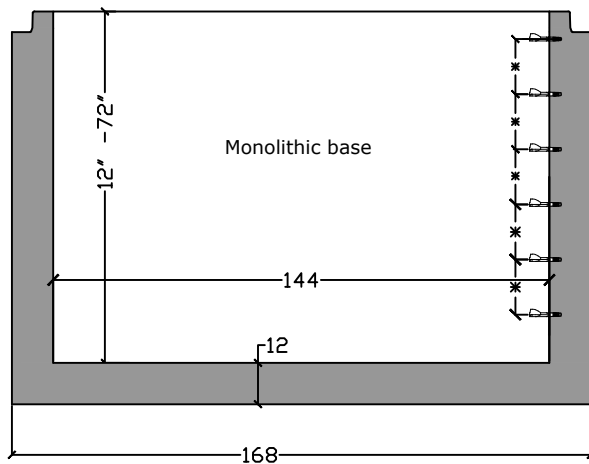
Maximum recommended base height - 48"



Flat Top	
12"	- 23,000 lb
14"	- 27,000 lb
16"	- 31,000 lb



Riser Weights	
12"	- 6,100 lb
16"	- 8,100 lb
24"	- 12,200 lb
32"	- 16,250 lb
36"	- 18,300 lb
48"	- 24,400 lb
60"	- 30,500 lb
64"	- 32,500 lb
72"	- 36,600 lb
84"	- 43,000 lb
96"	- 49,000 lb



Base Weights	
24"	- 35,200 lb
36"	- 41,300 lb
48"	- 47,400 lb
60"	- 53,500 lb
72"	- 59,600 lb

BARGER PRECAST

Specifications

Concrete: 5,000 psi minimum 28 day compressive strength

Reinforcing: Per ASTM C478 with design calculations performed by a Licensed P.E. Minimum 2" cover of all reinforcing steel.

Pipe Penetrations: All pipe penetrations are placed according to job requirements.

Pipe Seals: All pipe boots will meet ASTM C 923.

Sealant: Sealant used will meet ASTM C 990.

Steps: On 16" centers unless otherwise specified.

144" I.D. Precast Concrete Manhole ASTM C-478 Compliant

C.R. Barger & Sons, Inc.
P.O. Box 370 - Kingston TN 37763
Phone 888.882.5860 - BargerAndSons.com

Date: 2.242023

Drawn By: Eric Barger

Last Updated: 10.162023