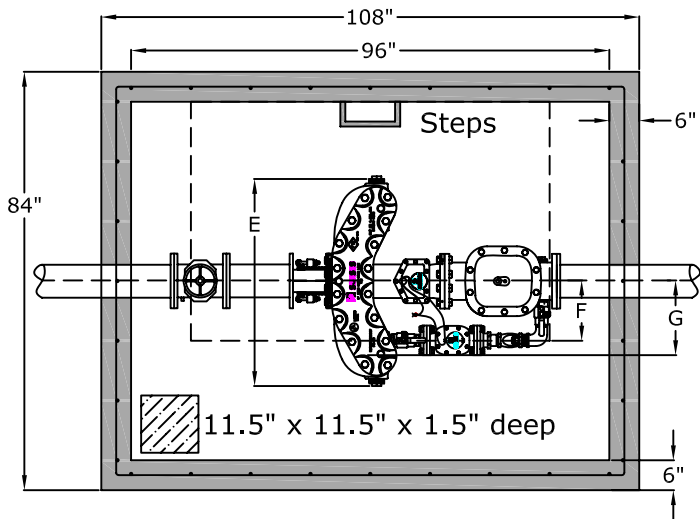


Top View

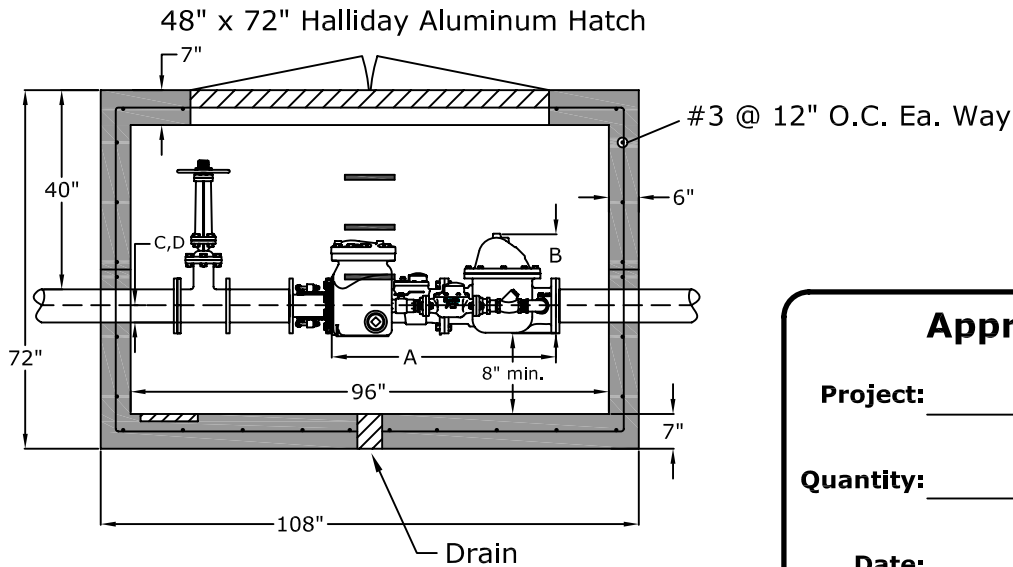


Sensus Compact FireLine Assembly with Flanged Coupling Adapter

Dimensions (inches)

Size	A	B	C	D	E	F	G
4"	33	16.25	4.5	4.5	35	11.75	14.25
6"	45	23.75	5.75	5.75	40.44	11.34	14.25
8"	53	24	6.75	6.75	45.5	13.65	17

Side View



Approved for Production

Project:

Quantity:

Date:

By:



Protecting the Environment
BargerAndSons.com
one tank at a time since 1967.

C.R. Barger & Sons, Inc.
P.O. Box 370 - Kingston TN 37763
Phone 888.882.5860 - BargerAndSons.com

Specifications

Concrete: 5,000 psi minimum strength (28 day)

Reinforcing: Primary reinforcement will be a #3 rebar (Grade 60) rebar.

Pipe Penetrations: The inlet and outlet are fitted with solid seals that meet or exceed ASTM C923 (4" D.I.P. - 10" D.I.P.). All pipe penetrations are placed according to job requirements.

Pipe Stands: Adjustable height pipe stands will be provided to support assembly.

Sealant: Sealant used will meet or exceed ASTM C990.

Steps: Aligned under hatch unless specified.

8' x 6' Fire & Domestic Meter Box

City of Franklin Water Services Detail

Date: 10.142008

Drawn By: **Eric Barger**

Approx. Vault Weight:	22,000 lbs.
-----------------------	-------------

