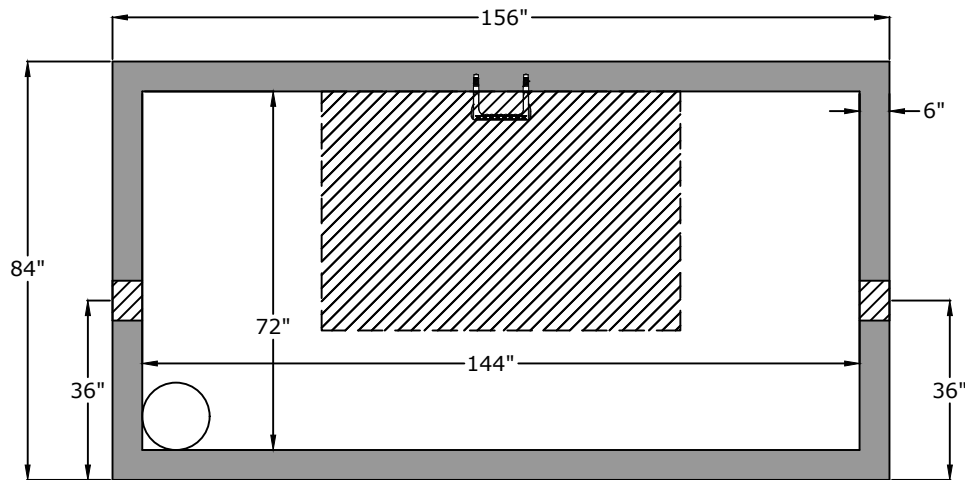


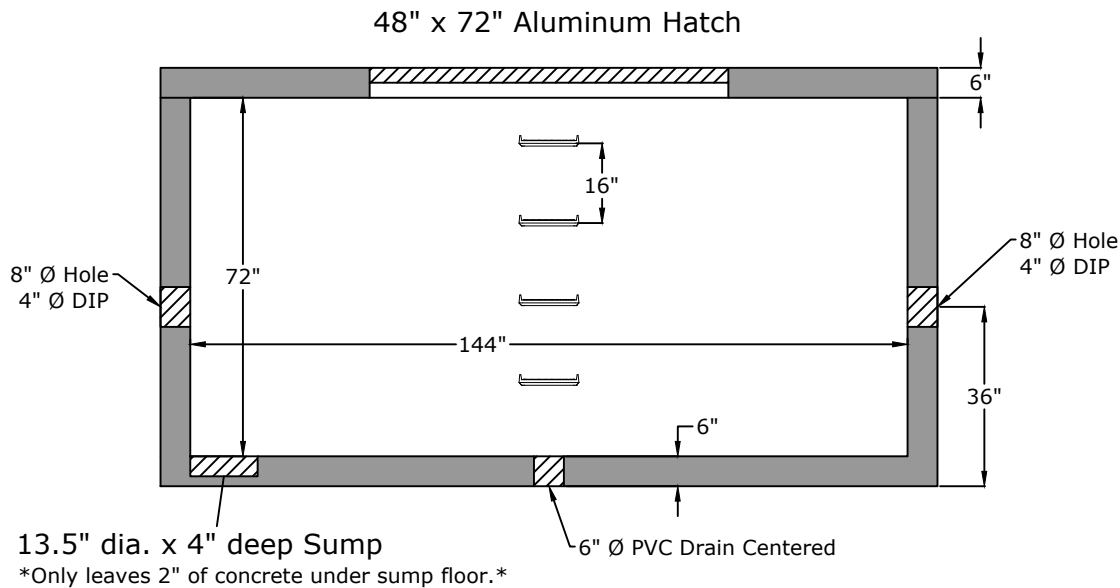
## Top View



## Notes

Top Weight - 7,000 lb  
Bottom Weight- 24,000 lb

## Side View



## Approved for Production

Project: \_\_\_\_\_

Date: \_\_\_\_\_

Quantity: \_\_\_\_\_

By: \_\_\_\_\_

# BARGER

## PRECAST

C.R. Barger & Sons, Inc.  
P.O. Box 370 - Kingston TN 37763  
Phone 888.882.5860 - BargerAndSons.com

## Specifications

**Concrete:** 5,000 psi minimum strength (28 day)  
**Reinforcing:** Primary reinforcement will be a #3 rebar (Grade 60) rebar.  
**Pipe Penetrations:** All pipe penetrations are placed according to job requirements.  
**Sealant:** Sealant used will meet or exceed ASTM C990.  
**Steps:** If required, the steps will be aligned under hatch unless specified.

**6' W x 12' L x 6' T I.D. Vault**  
**Consolidated Utility District**

Date: 12.212018

Drawn By: Eric Barger

Last Updated: 10.262023