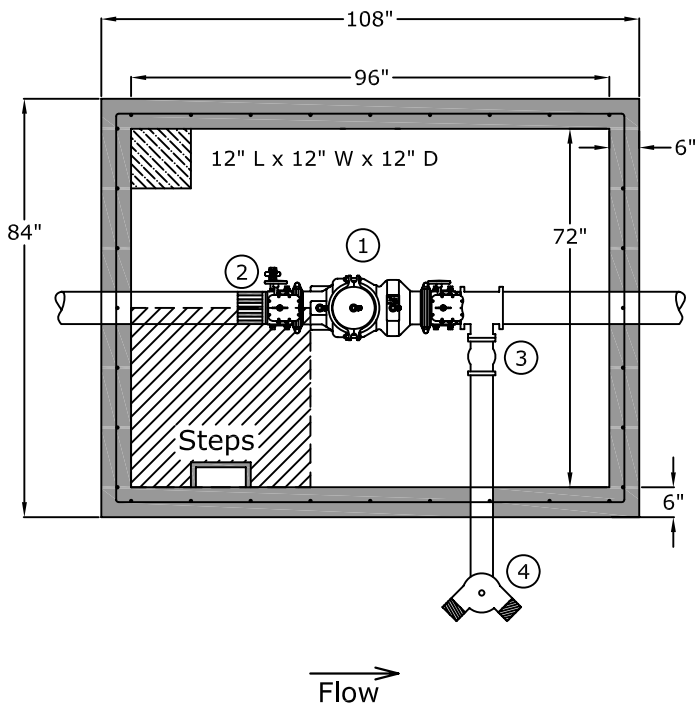
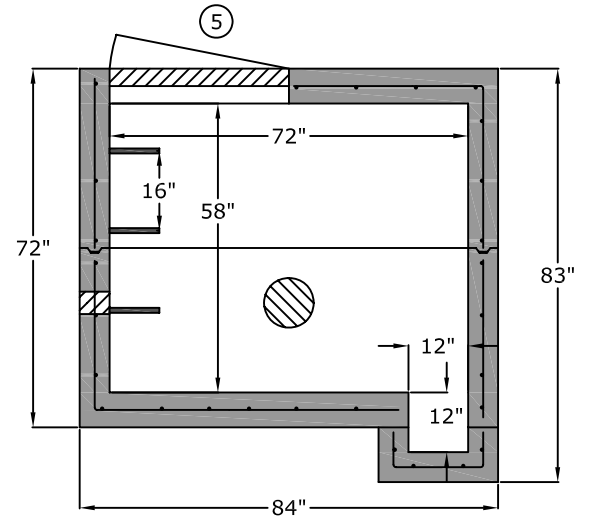


Top View

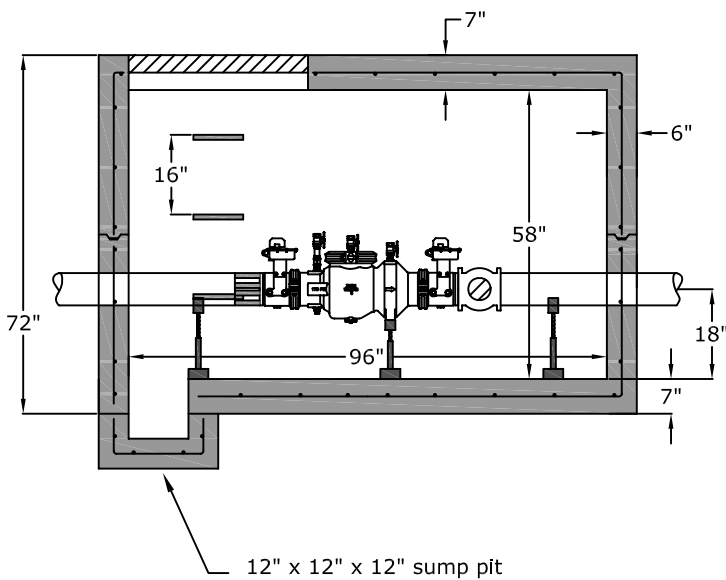


1. Wilkins Model 350A Double Check Valve Assembly
2. Restrained Flange Adapter
3. UL/FM 4" Swing Check Valve
4. 4" Siamese Connection
5. 36" x 36" Aluminum Hatch Cast-in-Place

End View

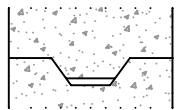


Side View



Joint Detail

Positive Lock Male/Female Keyway
 +- 0.005" tolerance



Approved for Production

Project: _____

Quantity: _____

Date: _____

By: _____



Specifications

Concrete: 5,000 psi minimum strength (28 day)

Pipe Penetrations: The inlet and outlet are fitted with solid rubber seals that meet or exceed ASTM C923 (4" D.I.P. - 10" D.I.P.) when requested. All pipe penetrations are placed according to job requirements.

Pipe Stands: Adjustable height pipe stands will be provided to support assembly.

Sealant: Sealant used will meet or exceed ASTM C990.

Steps: Aligned under hatch unless specified.



C.R. Barger & Sons, Inc.
 P.O. Box 370 - Kingston TN 37763
 Phone 888.882.5860 - BargerAndSons.com

8' x 6' Vault - 6" FT. Campbell DCV with FDC Connection

Date: 12.182008

Drawn By: Eric Barger

Approx. Vault Weight: 18,000 lbs.