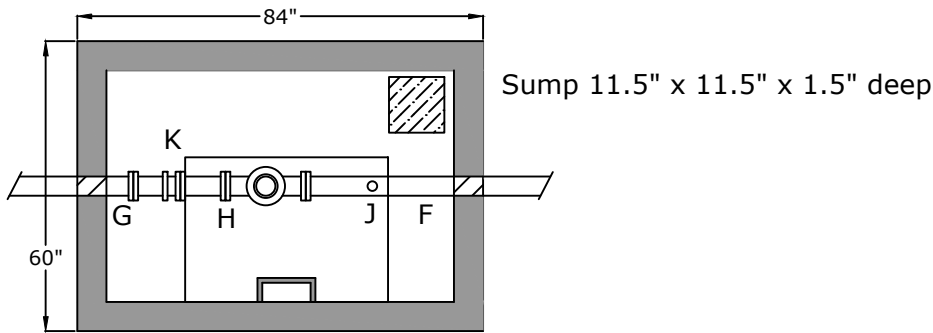


Top View



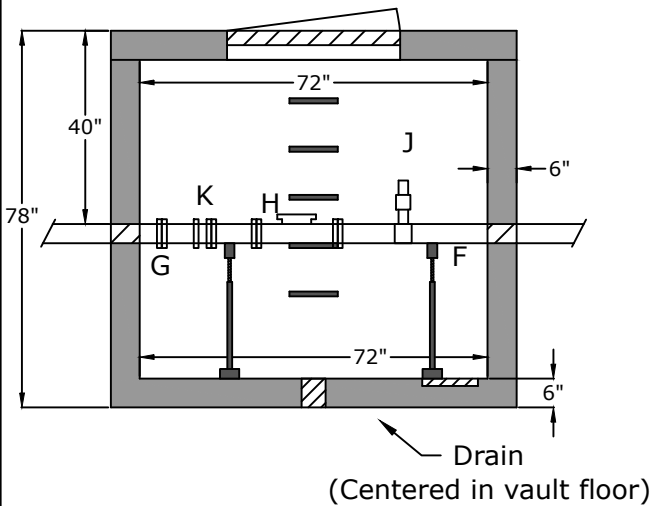
Flow →

Notes

- Lid Weight - 2,500 lb
- Bottom Weight - 9,500 lb
- F. 4" DIP FL x MJ
- G. 4" DIP FL x MJ
- H. Badger Recordall FSAA Radio Read Fire Meter
- J. Tap for Meter Testing Purposes
- K. Epoxy Coated Dismantling Joint

Side View

30" x 42" Halliday Hatch W1C3042



**Do NOT cut off DIP pipe ends!**

Approved for Production

Project: \_\_\_\_\_ Date: \_\_\_\_\_

Quantity: \_\_\_\_\_ By: \_\_\_\_\_



Specifications

- Concrete:** 5,000 psi minimum strength (28 day)
- Reinforcing:** Primary reinforcement will be a #3 rebar (Grade 60) rebar.
- Pipe Penetrations:** The inlet and outlet are fitted with solid seals that meet or exceed ASTM C923 (4" D.I.P. - 8" D.I.P.). All pipe penetrations are placed according to job requirements.
- Pipe Stands:** Adjustable height pipe stands will be provided to support assembly.
- Sealant:** Sealant used will meet or exceed ASTM C990.
- Steps:** Aligned under hatch unless specified.

**48" W x 72" L x 72" T - 4" Water Meter  
Gladeville Utility District**

C.R. Barger & Sons, Inc.  
P.O. Box 370 - Kingston TN 37763  
Phone 888.882.5860 - BargerAndSons.com

Date: 5.102017

Drawn By: Eric Barger

Approx. Vault Weight: See above