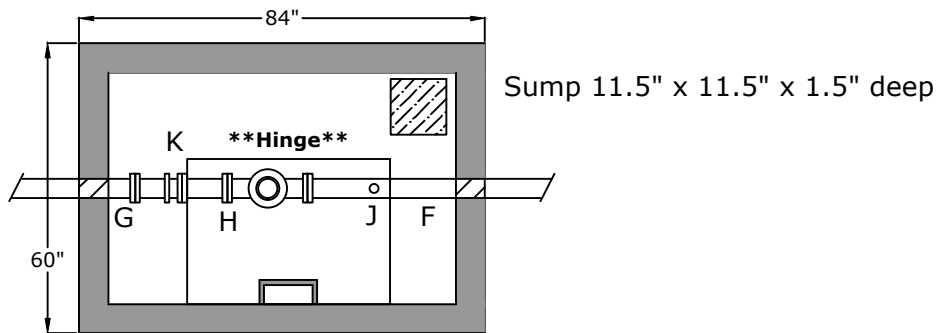


Top View



Flow →

Review the hinge location for the hatch

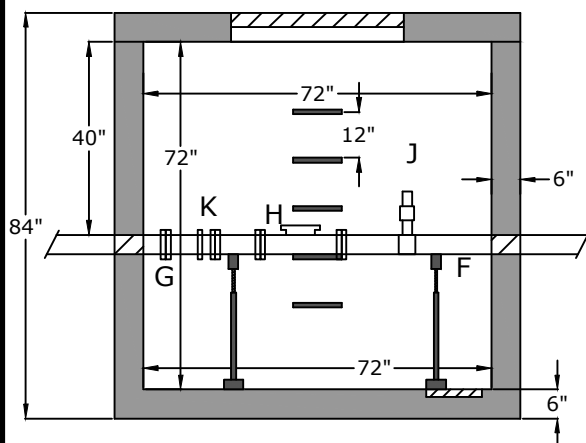
Notes

Lid Weight - 2,500 lb
Bottom Weight - 9,500 lb

F. 4" DIP FL x MJ
G. 4" DIP FL x MJ
H. Badger Recordall FSAA Radio Read Fire Meter
J. Tap for Meter Testing Purposes
K. Epoxy Coated Dismantling Joint

Side View

30" x 42" Halliday Hatch W1C3042



Do NOT cut off DIP pipe ends!

Approved for Production

Project: _____

Date: _____

Quantity: _____

By: _____

BARGER

PRECAST

C.R. Barger & Sons, Inc.
P.O. Box 370 - Kingston TN 37763
Phone 888.882.5860 - BargerAndSons.com

Specifications

Concrete: 5,000 psi minimum strength (28 day)

Reinforcing: Primary reinforcement will be a #3 rebar (Grade 60) rebar.

Pipe Penetrations: The inlet and outlet are fitted with solid seals that meet or exceed ASTM C923 (4" D.I.P. - 8" D.I.P.). All pipe penetrations are placed according to job requirements.

Pipe Stands: Adjustable height pipe stands will be provided to support assembly.

Sealant: Sealant used will meet or exceed ASTM C990.

Steps: Aligned under hatch unless specified.

48" W x 72" L x 72" T - 4" Water Meter
Gladeville Utility District

Date: 4.30.2019

Drawn By: Eric Barger

Approx. Vault Weight: See above