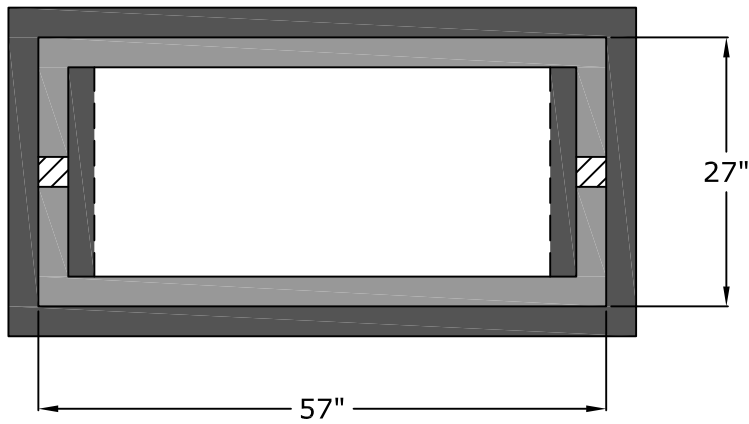
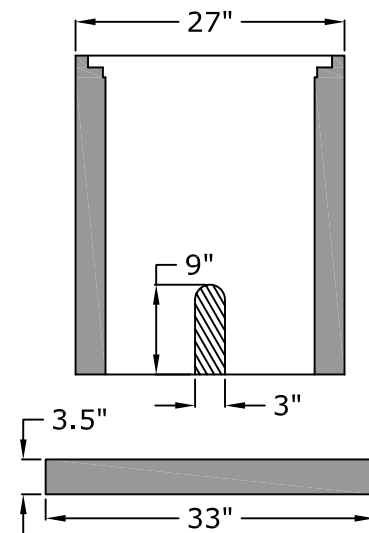


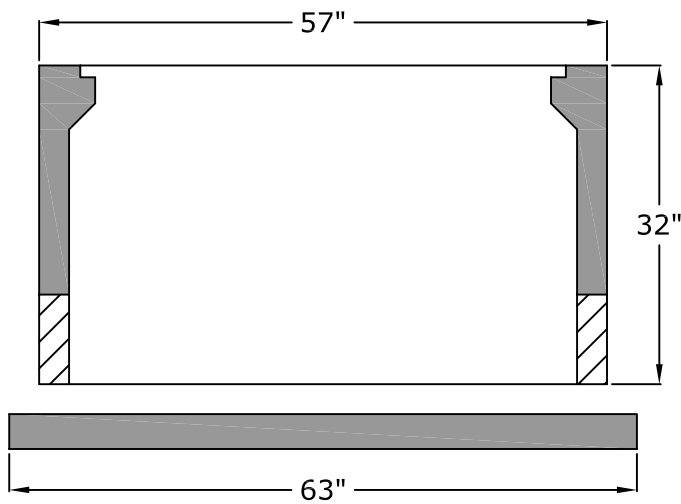
Top View



End View



Side View



**Approved for Production**

Project: \_\_\_\_\_

Quantity: \_\_\_\_\_

Date: \_\_\_\_\_

By: \_\_\_\_\_



**Specifications**

**Concrete:** 5,000 psi minimum strength (28 day)

**Reinforcing:** Primary reinforcement will be a #3 rebar (Grade 60) rebar.

**Pipe Penetrations:** The inlet and outlet are fitted with open slots.

**Sealant:** Sealant used will meet or exceed ASTM C990.

**Top Vault Placement:** The top vault shall be placed in a 0.375" deep groove embedded in the base pad. This will keep the top vault stationary while allowing for a location keyway to keep the top vault centered in place every time.



C.R. Barger & Sons, Inc.  
P.O. Box 370 - Kingston TN 37763  
Phone 888.882.5860 - BargerAndSons.com

**2" Nashville Meter Vault  
Nashville Metro Water Services Detail**

Date: 11.072008

Drawn By: Eric Barger

Approx. Vault Weight: 1200 lbs.