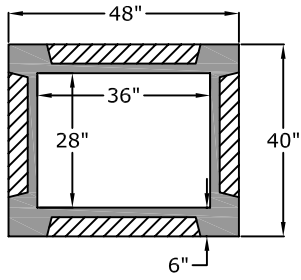
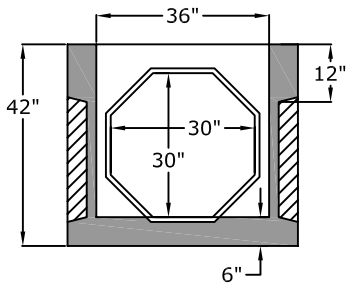


Top View

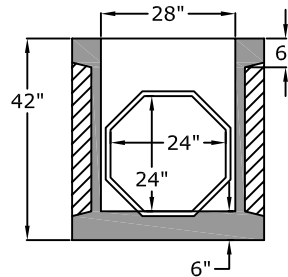


Side View

36" Side View



28" Side View



Approved for Production

Project: _____

Date: _____

Quantity: _____

By: _____



C.R. Barger & Sons, Inc.
 P.O. Box 370 - Kingston TN 37763
 Phone 888.882.5860 - BargerAndSons.com

Specifications

- Concrete:** 5,000 psi minimum strength (28 day)
- Reinforcement:** ASTM C 913 latest edition
- Lifting:** Lifters in floor of box.
- Panels:** Knock-out panel(s) shall be completely filled with non-shrink grout (4,000 psi.).
- Invert:** No invert

**28" W x 36" W x 36" T
 Catch Basin Knock-Out Box**

Date: 3.142011

Drawn By: Eric Barger

Approx. Vault Weight: 4,800 lb.