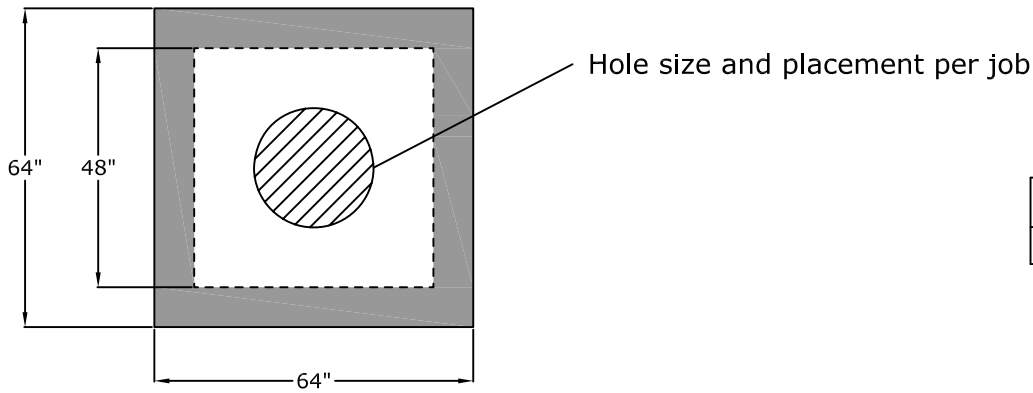


Cross Section



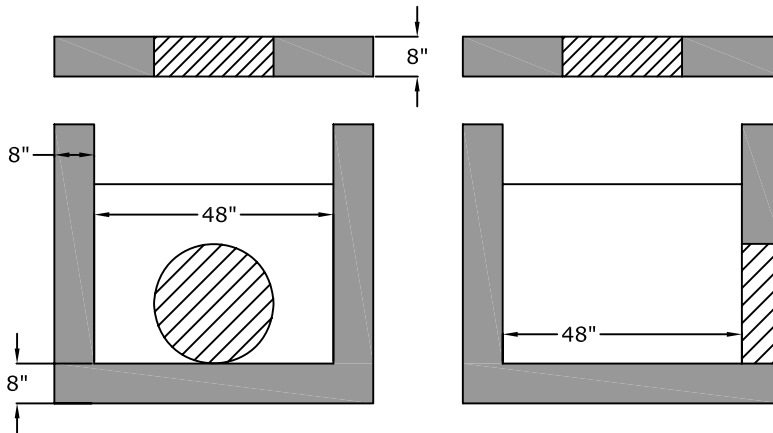
Top Lid

Height (in.)	Weight (lb.)
8"	2,800

Riser Weight

Height (in.)	Weight (lb.)
24"	3,700
30"	4,600
36"	5,500
42"	6,500
48"	7,400

Side View



Base Weight

Height (in.)	Weight (lb.)
24"	6,500
30"	7,400
36"	8,400
42"	9,300
48"	10,100

Approved for Production

Project: _____

Date: _____

Quantity: _____

By: _____



C.R. Barger & Sons, Inc.
P.O. Box 370 - Kingston TN 37763
Phone 888.882.5860 - BargerAndSons.com

Specifications

Concrete: 5,000 psi minimum strength (28 day)

Reinforcement: Per ASTM C857

General: Box structures will be manufactured to meet or exceed the latest revision of ASTM C857.

Joint: Butyl sealant will be ASTM C 990 (provided by Barger unless stated otherwise)

High Volume Catch Basin 48" W x 48" W

Date: 10.282010

Drawn By: Eric Barger

Approx. Vault Weight: Refer to Chart