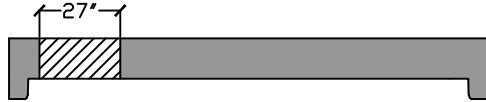
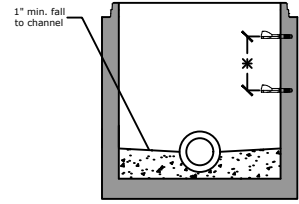


Side View

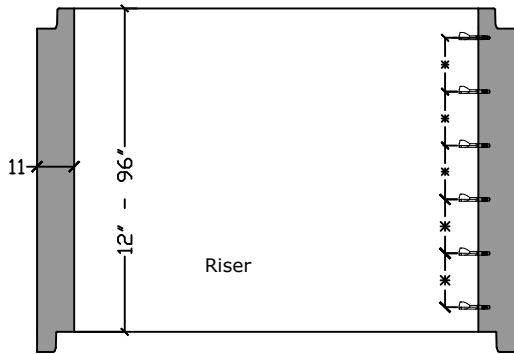


Flat Top
 12" - 17,700 lb
 14" - 20,500 lb
 16" - 23,250 lb

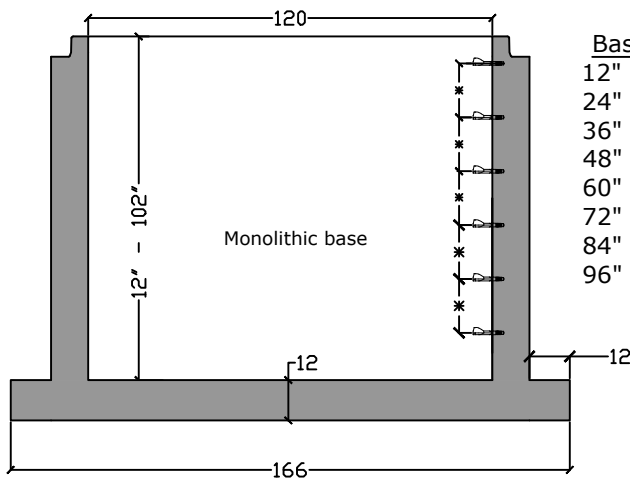


Manhole Base Preformed Invert Detail

Custom Heights
 Available in all pieces

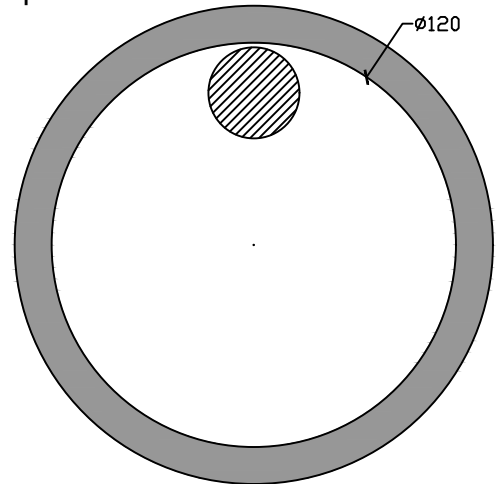


Riser Weights
 12" - 4,750 lb
 16" - 6,300 lb
 24" - 9,450 lb
 32" - 12,600 lb
 36" - 14,200 lb
 48" - 18,900 lb
 60" - 23,600 lb
 64" - 25,150 lb
 72" - 27,000 lb
 84" - 33,000 lb
 96" - 37,750 lb



Base Weights
 12" - 27,300 lb
 24" - 32,000 lb
 36" - 36,700 lb
 48" - 41,500 lb
 60" - 46,200 lb
 72" - 50,900 lb
 84" - 55,600 lb
 96" - 60,500 lb

Top View



BARGER
PRECAST

Specifications

Concrete: 5,000 psi minimum 28 day compressive strength
Reinforcing: Per ASTM C478 with design calculations performed by a Licensed P.E. Minimum 2" cover of all reinforcing steel.
Pipe Penetrations: All pipe penetrations are placed according to job requirements.
Pipe Seals: All pipe boots will meet ASTM C 923.
Sealant: Sealant used will meet ASTM C 990.
Steps: On 16" centers unless otherwise specified.
Preformed Invert: As required by plans or governing specifications.

120" I.D. Precast Concrete Manhole
Monolithic Extended Base Slab ASTM C-478 Compliant

C.R. Barger & Sons, Inc.
 P.O. Box 370 - Kingston TN 37763
 Phone 888.882.5860 - BargerAndSons.com

Date: 6.232015

Drawn By: Eric Barger

Updated: 11.212022