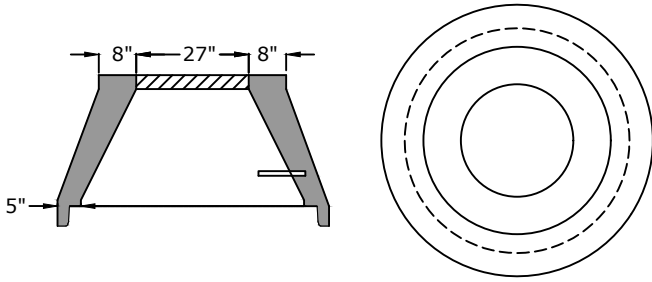
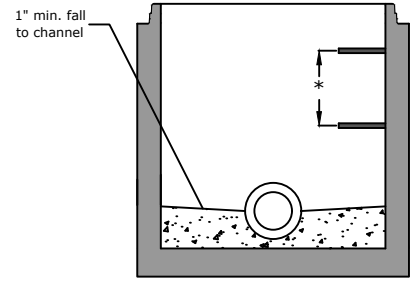


# Top View

## Concentric Cone

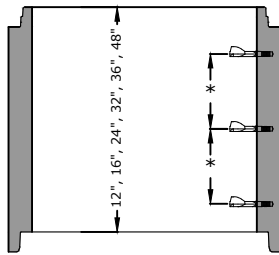


**Concentric Cone**  
27" - 3,600 lb.



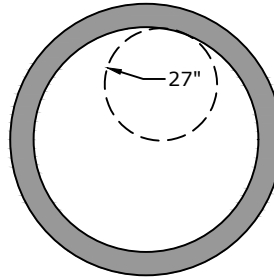
**Manhole Base Preformed Invert Detail**

## Riser



### Riser Weights

- 12" - 900 lb
- 16" - 1,150 lb
- 24" - 1,750 lb
- 32" - 2,300 lb
- 36" - 2,600 lb
- 48" - 3,450 lb



## Flat Top

- 27" dia. standard size for sewer
- Storm opening will match casting opening



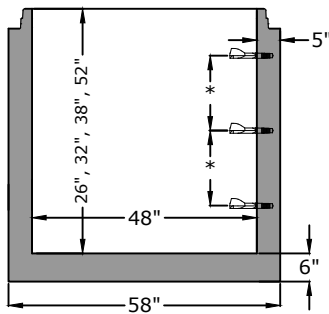
### Flat Top - 27" Round Opening

- 8" Thick Slab - 1,550 lb. Most common
- 10" Thick Slab - 1,900 lb.
- 12" Thick Slab - 2,200 lb.

### Flat Top - Rectangular Openings

- 24" x 24"
- 28" x 28"
- 24" x 34"
- 19" x 30"

## Monolithic base



### Base Weights

- 24" - 3,730 lb
- 32" - 4,320 lb
- 36" - 4,600 lb
- 38" - 4,730 lb
- 48" - 5,500 lb
- 52" - 5,762 lb
- 60" - 6,350 lb
- 69" - 7,000 lb



**Joint**

## Approved for Production

**Project:** \_\_\_\_\_

**Date:** \_\_\_\_\_

**Quantity:** \_\_\_\_\_

**By:** \_\_\_\_\_

# BARGER PRECAST

C.R. Barger & Sons, Inc.  
P.O. Box 370 - Kingston TN 37763  
Phone 865.270.8080 - BargerAndSons.com

### Specifications

- Concrete:** 4,500 psi minimum 28 day compressive strength
- Reinforcing:** Per ASTM C478 with design calculations performed by a Licensed P.E. Minimum 2" cover of all reinforcing steel.
- Pipe Penetrations:** All pipe penetrations are placed according to job requirements.
- Pipe Seals:** All pipe boots will meet ASTM C 923.
- Sealant:** Sealant used will meet ASTM C 990.
- Steps:** On 16" centers unless otherwise specified.
- Preformed Invert:** As required by plans or governing specifications.

## 48" Ø Concentric Manhole ASTM C-478 Compliant

Date: 8.032022

Drawn By: Eric Barger