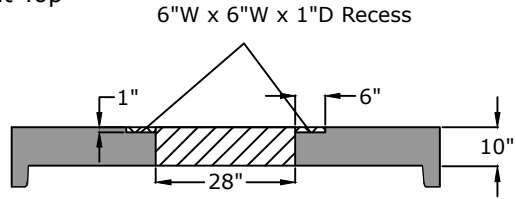
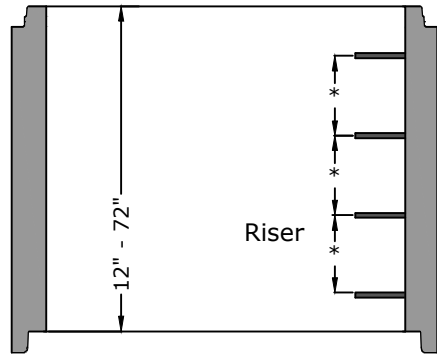


# Top View

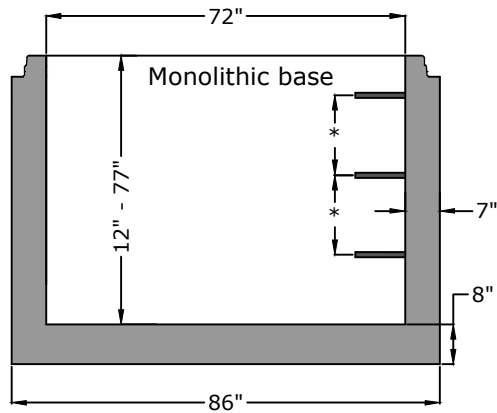
Flat Top



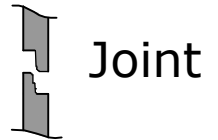
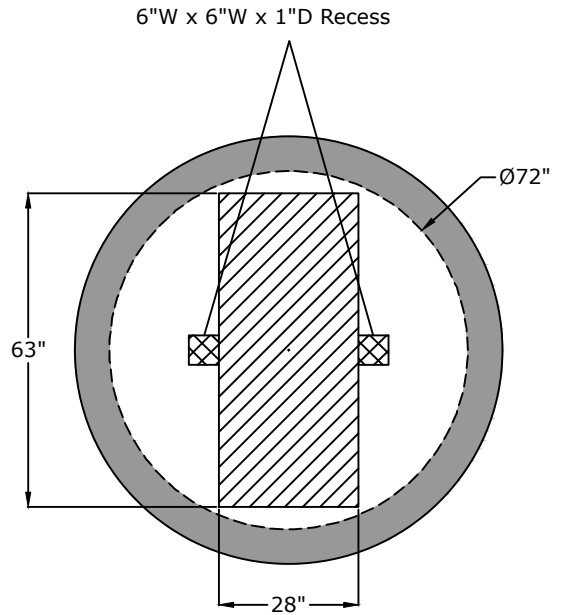
Flat Top  
10" - 5,000 lb.



Riser Weights  
36" - 5,400 lb.  
48" - 7,200 lb.  
60" - 9,000 lb.  
72" - 10,800 lb.



Base Weights  
36" - 9,350 lb.  
48" - 11,150 lb.  
60" - 13,000 lb.  
72" - 14,700 lb.  
77" - 15,500 lb.



## Approved for Production

Project: \_\_\_\_\_

Date: \_\_\_\_\_

Quantity: \_\_\_\_\_

By: \_\_\_\_\_

# BARGER PRECAST

### Specifications

- Concrete:** 5,000 psi minimum 28 day compressive strength
- Reinforcing:** Per ASTM C478 with design calculations performed by a Licensed P.E. Minimum 2" cover of all reinforcing steel.
- Pipe Penetrations:** All pipe penetrations are placed according to job requirements.
- Pipe Seals:** All pipe boots will meet ASTM C 923.
- Sealant:** Sealant used will meet ASTM C 990.
- Steps:** On 16" centers unless otherwise specified.
- Preformed Invert:** As required by plans or governing specifications.

## 72" I.D. Metro Double Manhole

C.R. Barger & Sons, Inc.  
P.O. Box 370 - Kingston TN 37763  
Phone 888.882.5860 - BargerAndSons.com

Date: 2.162018

Drawn By: Eric Barger

Approx. weight: See chart