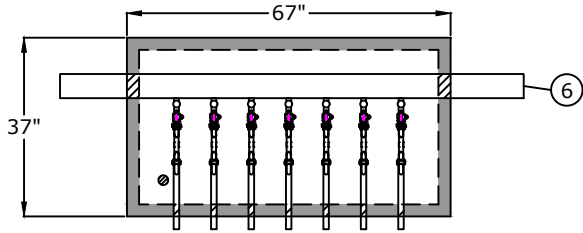
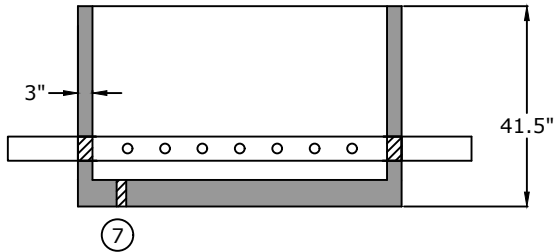


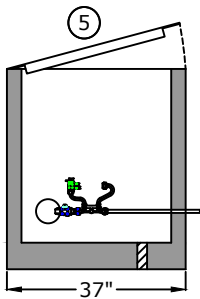
### Top View



### Side View

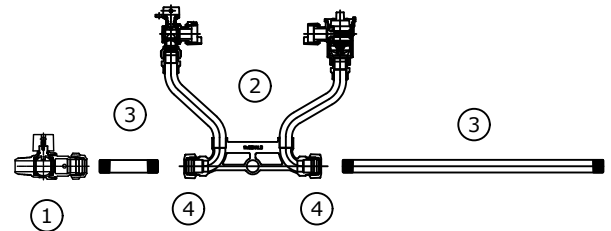


### End View

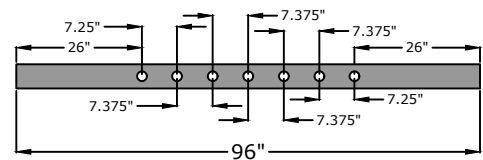


1. Corporation Stop  
AY  $\frac{3}{4}$ " 74101BCAF (300 PSI)
2. Meter Setter  
AY  $\frac{3}{4}$ " 720-207WDDD 33 X992
3. Brass nipples  
AY  $\frac{3}{4}$ " x 4"  
AY  $\frac{3}{4}$ " x 18"  
(poly wrap nipple through wall)
4. Multi-purpose adapter  
AY  $\frac{3}{4}$ " 720-3D3 ASY
5. 29" x 59" opening single leaf aluminum door, pedestrian rated (300 lb/ft<sup>2</sup>)
6. 4" or 6" D.I.P. Class 52 / PR 350
7. 2" drain hole

### Component Detail



### Pipe detail for taps



## Approved for Production

Project: \_\_\_\_\_

Date: \_\_\_\_\_

Quantity: \_\_\_\_\_

By: \_\_\_\_\_

# BARGER PRECAST

C.R. Barger & Sons, Inc.  
P.O. Box 370 - Kingston TN 37763  
Phone 888.882.5860 - BargerAndSons.com

### Specifications

**Concrete:** 5,000 psi minimum strength (28 day)

**Pipe Penetrations:** All pipe penetrations are placed according to job requirements.

## 7-Gang $\frac{3}{4}$ " Meter Vault Barger Standard

Date: 5.272022

Drawn By: Eric Barger

Approx. Empty Vault Weight: 3,100 lbs.