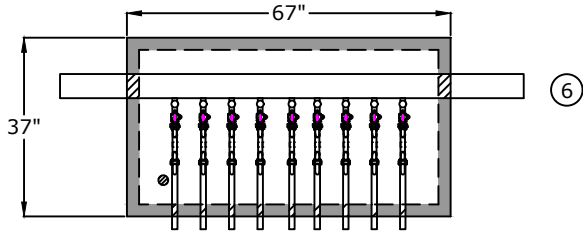
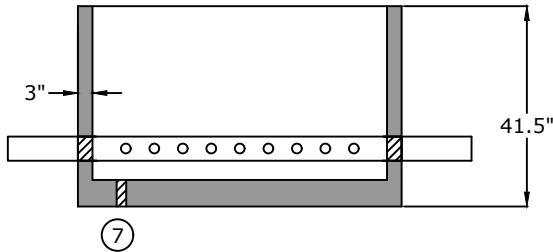


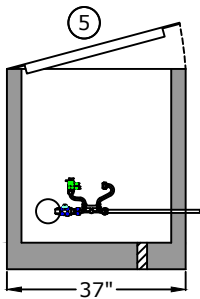
Top View



Side View

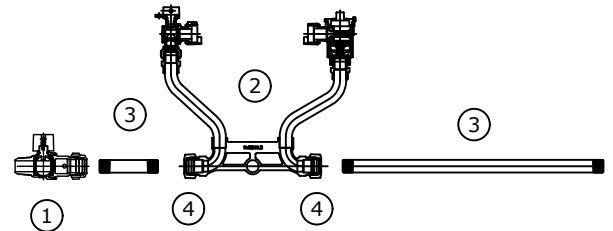


End View

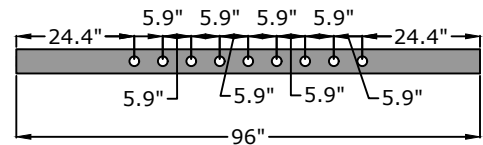


1. Corporation Stop
AY $\frac{3}{4}$ " 74101BCAF (300 PSI)
2. Meter Setter
AY $\frac{3}{4}$ " 720-207WDDD 33 X992
3. Brass nipples
AY $\frac{3}{4}$ " x 4"
AY $\frac{3}{4}$ " x 18"
(poly wrap nipple through wall)
4. Multi-purpose adapter
AY $\frac{3}{4}$ " 720-3D3 ASY
5. 29" x 59" opening single leaf aluminum door, pedestrian rated (300 lb/ft²)
6. 4" or 6" D.I.P. Class 52 / PR 350
7. 2" drain hole

Component Detail



Pipe detail for taps



Approved for Production

Project: _____

Date: _____

Quantity: _____

By: _____

BARGER PRECAST

Specifications

Concrete: 5,000 psi minimum strength (28 day)

Pipe Penetrations: All pipe penetrations are placed according to job requirements.

9-Gang $\frac{3}{4}$ " Meter Vault Barger Standard

C.R. Barger & Sons, Inc.
P.O. Box 370 - Kingston TN 37763
Phone 888.882.5860 - BargerAndSons.com

Date: 6.022022

Drawn By: Eric Barger

Approx. Empty Vault Weight: 3,100 lbs.