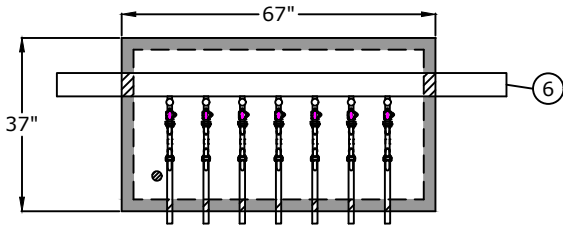
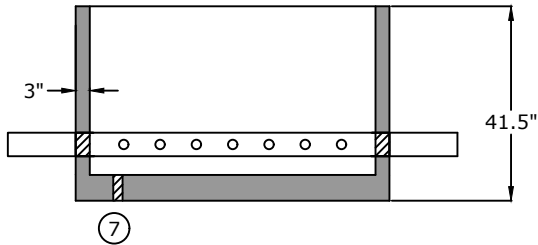


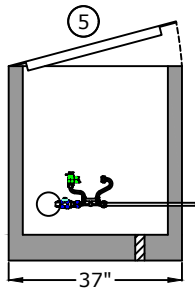
Top View



Side View

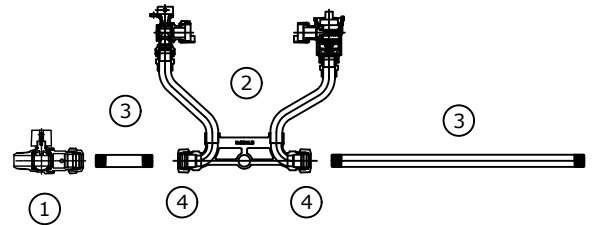


End View

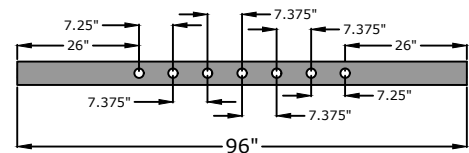


1. Corporation Stop
Ford FB-1600-4-NL
2. Meter Setter $\frac{3}{4}$ "
VB72-7W-11-43-NL
3. Brass nipples
1" x 4"
 $\frac{3}{4}$ " x 18"
(poly wrap nipple through wall)
4. Dual Purpose Swivel
Inlet 1" utility FIPT
Outlet $\frac{3}{4}$ " customer FIPT
5. 29" x 59" opening single leaf
aluminum door, pedestrian rated (300
lb/ft²)
6. 4" or 6" D.I.P. Class 52 / PR 350
7. 2" drain hole

Component Detail



Pipe detail for taps



Approved for Production

Project: _____

Date: _____

Quantity: _____

By: _____

BARGER PRECAST

C.R. Barger & Sons, Inc.
P.O. Box 370 - Kingston TN 37763
Phone 888.882.5860 - BargerAndSons.com

Specifications

Concrete: 5,000 psi minimum strength (28 day)
Pipe Penetrations: All pipe penetrations are placed according to job requirements.

7-Gang $\frac{3}{4}$ " Meter Vault City of Cookeville

Date: 6.182022

Drawn By: Eric Barger

Approx. Empty Vault Weight: 3,100 lbs.