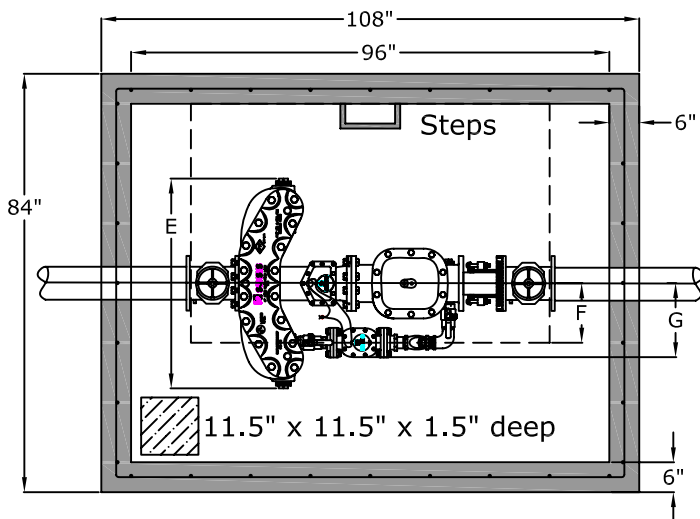


Top View



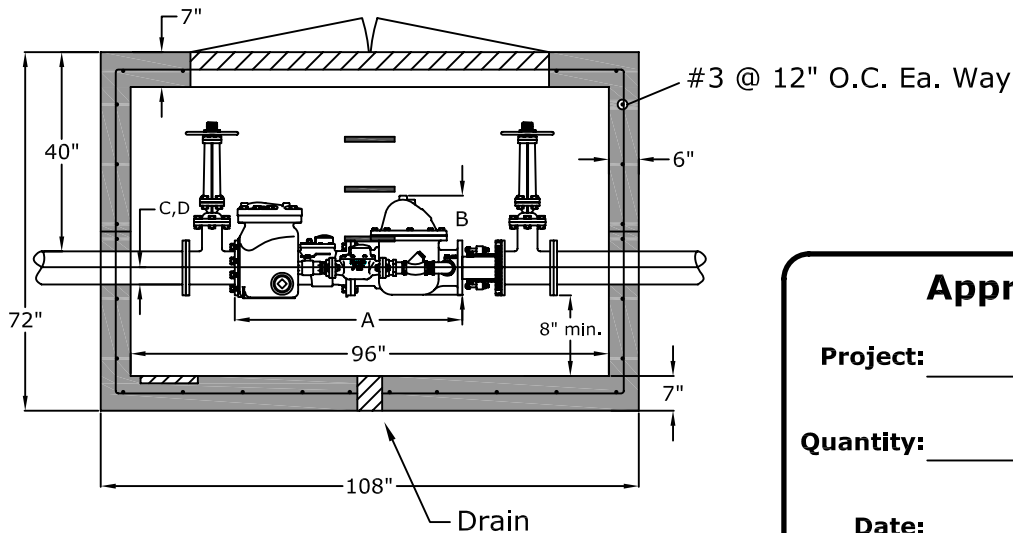
Sensus Compact FireLine Assembly with Smith-Blair 913 Flanged Coupling Adapter

Dimensions (inches)

Size	A	B	C	D	E	F	G
4"	33	16.25	4.5	4.5	35	11.75	14.25
6"	45	23.75	5.75	5.75	40.44	11.34	14.25
8"	53	24	6.75	6.75	45.5	13.65	17
10"	68	28.13	8.5	8.5	50	18.18	18.74

Side View

48" x 72" Bilco PDCM-3 Aluminum Hatch



Approved for Production

Project: _____

Quantity: _____

Date: _____

By: _____



Protecting the Environment
BargerAndSons.com
 one tank at a time since 1967.

C.R. Barger & Sons, Inc.
 P.O. Box 370 - Kingston TN 37763
 Phone 888.882.5860 - BargerAndSons.com

Specifications

Concrete: 5,000 psi minimum strength (28 day)

Reinforcing: Primary reinforcement will be a #3 rebar (Grade 60) rebar.

Pipe Penetrations: The inlet and outlet are fitted with solid seals that meet or exceed ASTM C923 (4" D.I.P. - 10" D.I.P.). All pipe penetrations are placed according to job requirements.

Pipe Stands: Adjustable height pipe stands will be provided to support assembly.

Sealant: Sealant used will meet or exceed ASTM C990.

Steps: Aligned under hatch unless specified.

8' x 6' Fire Meter Box

City of Brentwood Water Services Detail

Date: 8.202008

Drawn By: Eric Barger

Approx. Vault Weight: 18,000 lbs.