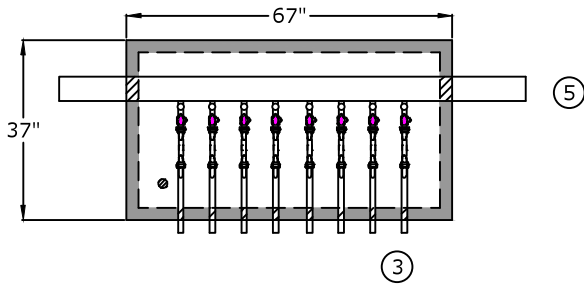
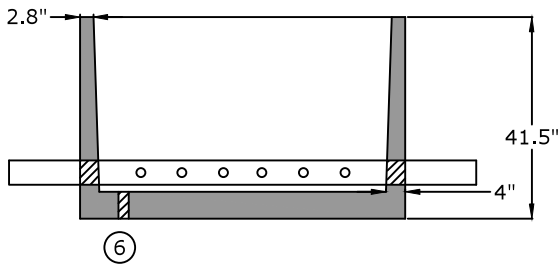


### Top View

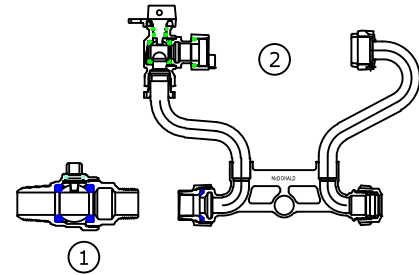


1. Meter Yoke  
A.Y. McDonald 21-207WXQQ 33  
Ford VB72-7W-44-33-Q
2. Corporation Stop  
A.Y. McDonald 4704BQ 3/4  
Ford FB11003Q
3. Type K Copper
4. 30" x 60" opening single leaf aluminum door, pedestrian rated (300 lb/ft<sup>2</sup>)
5. 4" Class 52 D.I.P.
6. 2" drain hole

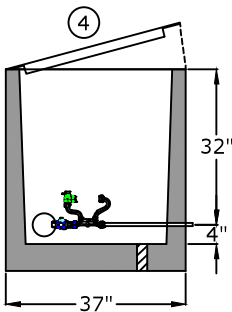
### Side View



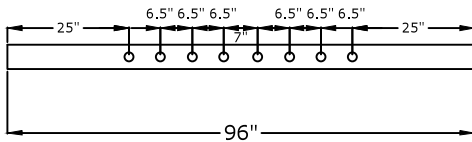
### Component Detail



### End View



### Pipe detail for taps



### Approved for Production

**Project:** \_\_\_\_\_

**Quantity:** \_\_\_\_\_

**Date:** \_\_\_\_\_

**By:** \_\_\_\_\_



Five generations. One goal.  
**BargerAndSons.com**  
Quality precast concrete.

**C.R. Barger & Sons, Inc.**  
P.O. Box 370 - Kingston TN 37763  
Phone 888.882.5860 - BargerAndSons.com

### Specifications

- Concrete:** 5,000 psi minimum strength (28 day)
- Pipe Penetrations:** The inlet and outlet are fitted with solid rubber seals that meet or exceed ASTM C923 (4" D.I.P. - 10" D.I.P.) when requested. All pipe penetrations are placed according to job requirements.
- Pipe Stands:** Adjustable height pipe stands can be provided to support assembly.
- Sealant:** Sealant used will meet or exceed ASTM C990.
- Steps:** Aligned under hatch unless specified.

### 8 Gang Meter Vault 41.5"

Date: 2.012011

Drawn By: Eric Barger

Approx. Vault Weight: 3,050 lbs.