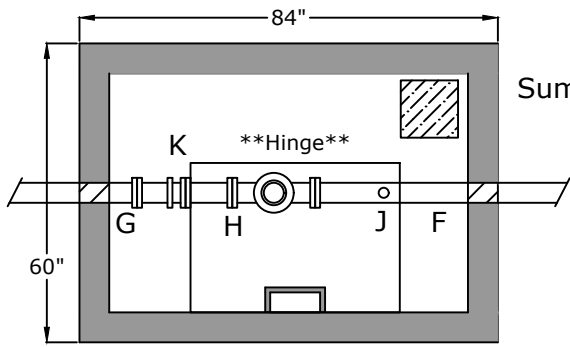


Top View



Sump 11.5" x 11.5" x 1.5" deep

Notes

Lid Weight - 2,500 lb
Bottom Weight - 9,500 lb

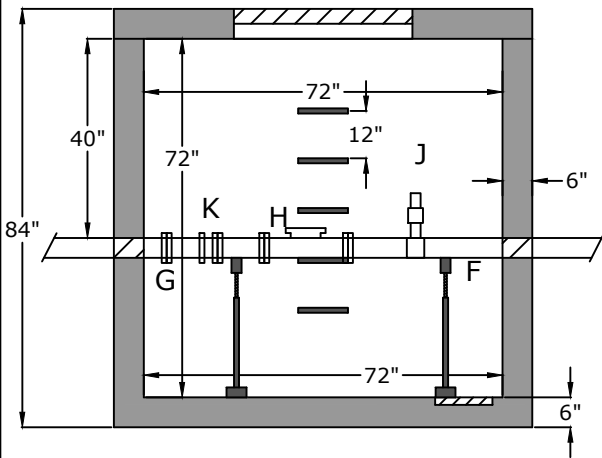
- F. 4" DIP FL x MJ
- G. 4" DIP FL x MJ
- H. Badger Recordall FSAA Radio Read Fire Meter
- J. Tap for Meter Testing Purposes
- K. Epoxy Coated Dismantling Joint

Flow →

Review the hinge location for the hatch

Side View

30" x 42" Halliday Hatch W1C3042



Do NOT cut off DIP pipe ends!

Approved for Production

Project: _____ Date: _____

Quantity: _____ By: _____



Specifications

- Concrete:** 5,000 psi minimum strength (28 day)
- Reinforcing:** Primary reinforcement will be a #3 rebar (Grade 60) rebar.
- Pipe Penetrations:** The inlet and outlet are fitted with solid seals that meet or exceed ASTM C923 (4" D.I.P. - 8" D.I.P.). All pipe penetrations are placed according to job requirements.
- Pipe Stands:** Adjustable height pipe stands will be provided to support assembly.
- Sealant:** Sealant used will meet or exceed ASTM C990.
- Steps:** Aligned under hatch unless specified.

**48" W x 72" L x 72" T - 4" Water Meter
Gladeville Utility District**

C.R. Barger & Sons, Inc.
P.O. Box 370 - Kingston TN 37763
Phone 888.882.5860 - BargerAndSons.com

| | | |
|----------------|-----------------------|---------------------------------|
| Date: 4.302019 | Drawn By: Eric Barger | Approx. Vault Weight: See above |
|----------------|-----------------------|---------------------------------|