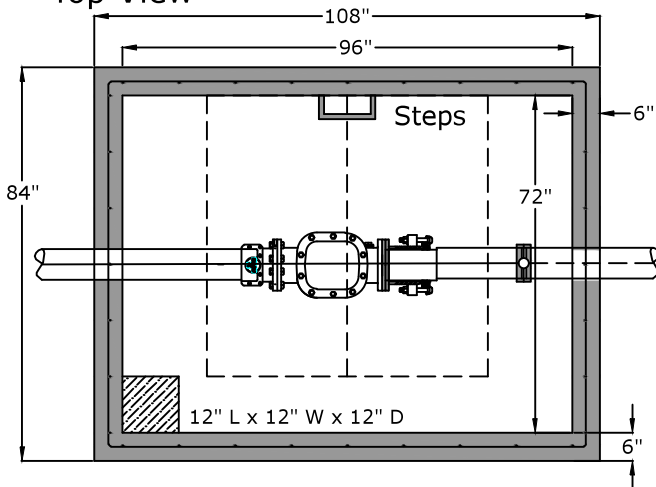


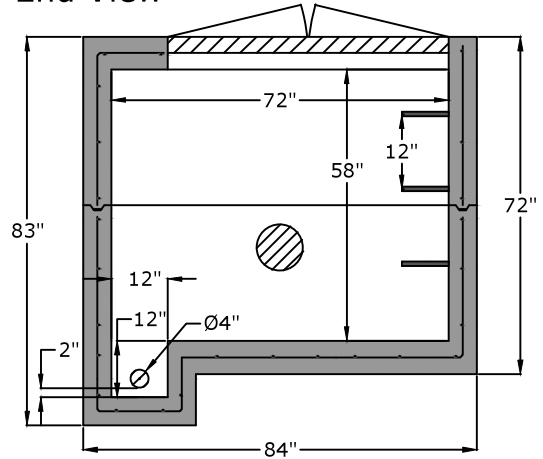
Top View



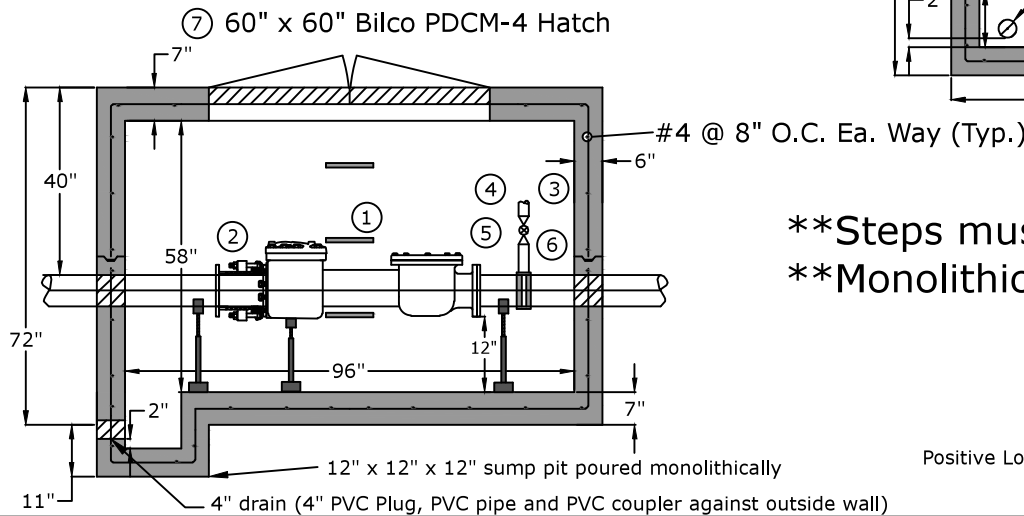
1. Compound or turbo meter and strainer w/6 wheel radio read
2. Smith-Blair 913 flanged coupling adapter
3. 2" double strap saddle
4. 2" bronze nipple
5. 2" ball valve with plug
6. 2" tap is to be made a minimum of 2 pipe diameters downstream of meter.
7. Precast concrete vault supplied by H.D. Supply and manufactured by C.R. Barger & Sons, Inc. with Bilco PDCM-4 (5'x5')

Sensus or approved equal compound or turbo meter with Smith-Blair 913 Flanged Coupling Adapter Meter Supplied by H.V.U.D. at developers expense
By pass line to be same size as main line

End View



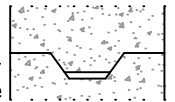
Side View



****Steps must be on 12" centers**
****Monolithic sump box**

Joint Detail

Positive Lock Male/Female Keyway
+/- 0.005" tolerance



Approved for Production

Project: _____

Date: _____

Quantity: _____

By: _____



Five generations. One goal.
BargerAndSons.com
Quality precast concrete.

C.R. Barger & Sons, Inc.
P.O. Box 370 - Kingston TN 37763
Phone 888.882.5860 - BargerAndSons.com

Specifications

- Concrete:** 5,000 psi minimum strength (28 day)
- Pipe Penetrations:** The inlet and outlet are fitted with solid rubber seals that meet or exceed ASTM C923 (4" D.I.P. - 10" D.I.P.) when requested. All pipe penetrations are placed according to job requirements.
- Pipe Stands:** Adjustable height pipe stands will be provided to support assembly.
- Sealant:** Sealant used will meet or exceed ASTM C990.
- Steps:** Aligned under hatch unless specified.

**8' x 6' Compound or Turbo Meter Assembly
Harpeth Valley Utility District**

Date: 2.242014

Drawn By: Eric Barger

Approx. Vault Weight: 24,000 lbs.