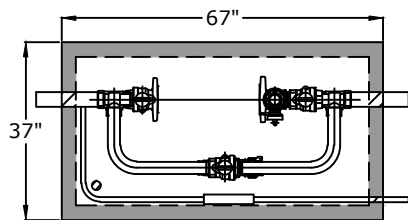


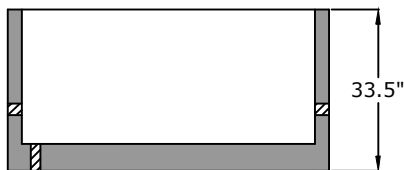
Top View



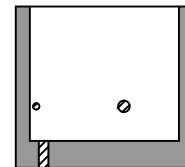
Notes

1. (2) 2" x 18" brass nipple
2. (1) 2" x 1" A.Y. McDonald no-rise no lead setter
720R700KWFF777 x 451 (17.25" lay length meter)
3. (3) 2" Oval meter gasket 2-bolt
4. (3) $\frac{5}{8}$ " Hex bolt and nut (2 each)
5. (1) A.Y. McDonald MIPxPJC adapter 74753-22 no lead
6. (1) A.Y. McDonald 1" copper tube L 12"x16"
7. (1) A.Y. McDonald ball valve PJCxFIPT
76102W-22 no lead
8. (1) 1" A.Y. McDonald line setter 770-4-WDMD 44
9. (1) A.Y. McDonald $\frac{5}{8}$ " x 1" 710J14KIT
10. 1" x 24" brass nipple
11. 29" x 59" opening single leaf aluminum door,
pedestrian rated (300 lb/ft²) S1R029059CD
12. 2" drain hole
13. Utility to supply 2" Sensus meter with internal
strainer

Side View



End View



Approved for Production

Project: _____

Date: _____

Quantity: _____

By: _____

BARGER PRECAST

C.R. Barger & Sons, Inc.
P.O. Box 370 - Kingston TN 37763
Phone 865.270.8080 - BargerAndSons.com

Specifications

Concrete: 5,000 psi minimum strength (28 day)

Pipe Penetrations: All pipe penetrations are placed according to job requirements.

2" Meter with Bypass - 1" Irrigation MWSD

Date: 5.122021

Drawn By: Eric Barger

Approx. Vault Weight: 3,050 lbs.