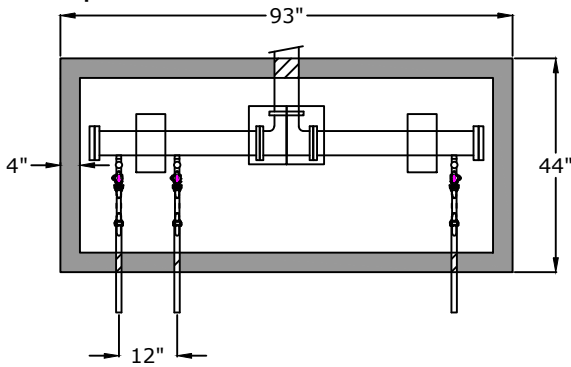
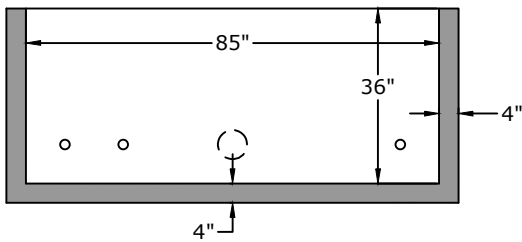


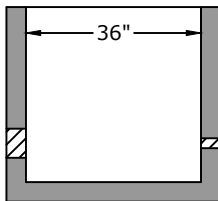
Top View



Side View

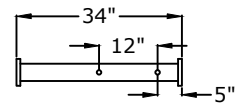


End View



1. (1) 3" Flg x PE 3'-0" spool piece
2. (5) Flange kits
3. (1) 3" Flange tee
4. (1) 3" Flg x Flg 2'-10" with one $\frac{3}{4}$ " CC taps
5. (1) 3" Flg x Flg 2'-10" with two $\frac{3}{4}$ " CC taps
6. (2) 3" Blind flange
7. (3) 3" x $\frac{3}{4}$ " NPT $\frac{3}{4}$ x $\frac{17}{13}$ saddle OD range 3.45 - 4.05
8. (3) $\frac{3}{4}$ " x 4" brass nipple
9. (3) AYM34583476101MW $\frac{3}{4}$ " x $\frac{5}{8}$ " x $\frac{3}{4}$ " ball valve FIP x MSN
10. (3) $\frac{3}{4}$ " meter idler
11. (3) $\frac{5}{8}$ " x $\frac{3}{4}$ " meter + MXu provided by Metro
12. (3) AYM34583476110MWQ $\frac{3}{4}$ " x $\frac{5}{8}$ " x $\frac{3}{4}$ " ball valve QJC x MSN
13. (1) Halliday S1K3584CBD 35" x 84" S1K F+C 316SS

Pipe detail for taps



Approved for Production

Project: _____

Date: _____

Quantity: _____

By: _____



Specifications

- Concrete:** 5,000 psi minimum strength (28 day)
- Pipe Penetrations:** All pipe penetrations are placed according to job requirements.
- Pipe Stands:** Adjustable height pipe stands can be provided to support assembly.
- Sealant:** Sealant used will meet or exceed ASTM C990.

**3 Gang Meter Vault - Nashville Metro
36" W x 85" L x 36" T**

C.R. Barger & Sons, Inc.
P.O. Box 370 - Kingston TN 37763
Phone 888.882.5860 - BargerAndSons.com

Date: 11.212017

Drawn By: Eric Barger

Approx. Vault Weight: 4,600 lbs.