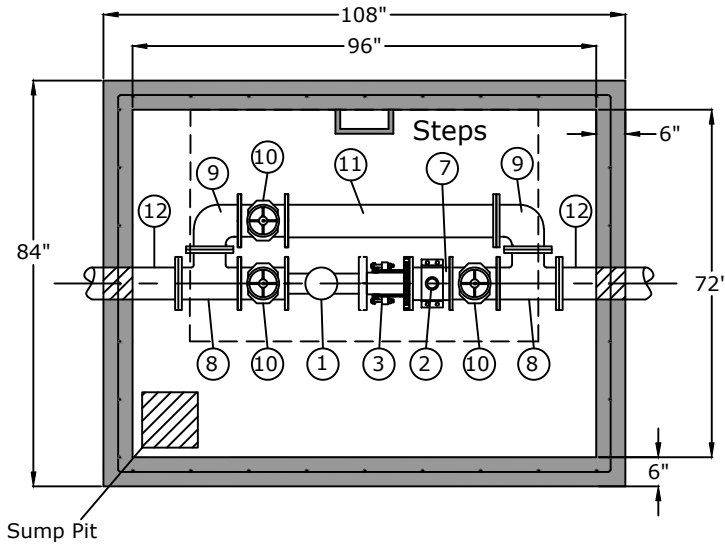


Top View



1. 4" Octave Ultrasonic Meter with 96501019 MOD Pulse Cable.

2. Test Port: 4x2 Saddle, 2x6 Brass Nipple, 2" Ball Valve to be placed on No. 7.

3. Dismantling coupler.

4. Precast concrete vault supplied by H.D. Supply and manufactured by Barger and Sons with a 48" x 72" Bilco PDCM-3 Aluminum Hatch or equal.

5. Vault depth shall be determined and sized accordingly.

6. Drain line shall be 4" size with sufficient field drainage capacity.

7. 4 Flange x Flange 0'-9".

8. 4" Flange Tee (2).

9. 4" Flange 90 (2).

10. 4" Flange Gate Valve (3).

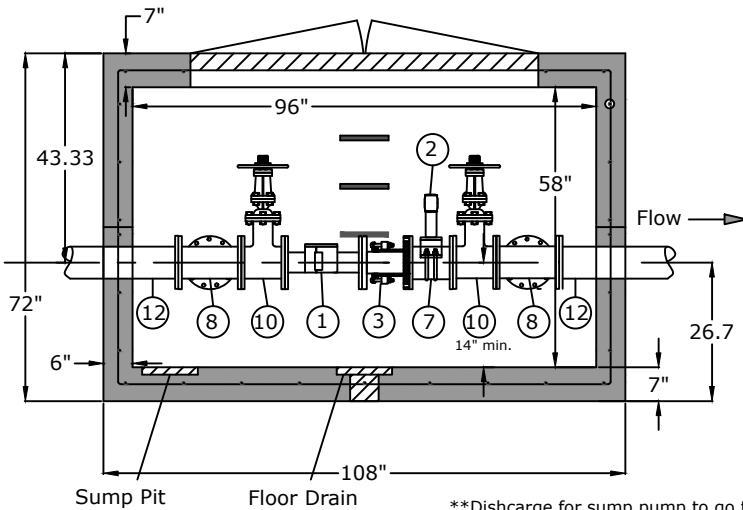
11. 4" Flange x Flange 3'-7 11/16" (1).

12. 4" Flange x Pe 6'-0" (2).

13. 4" Flange Packs (13).

Side View

48" x 72" double leaf door offset to the ladder side of the vault



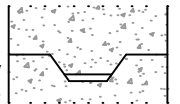
Sump Pit

Floor Drain

**Discharge for sump pump to go through top of vault (2" sch. 40 hole only)

Positive Lock Male/Female Keyway
+/- 0.005" tolerance

Joint Detail



Approved for Production

Project: _____ Date: _____

Quantity: _____ By: _____

BARGER PRECAST

C.R. Barger & Sons, Inc.
P.O. Box 370 - Kingston TN 37763
Phone 888.270.8080 - BargerAndSons.com

Specifications

Concrete: 5,000 psi minimum strength (28 day)

Reinforcing: Primary reinforcement will be a #3 rebar (Grade 60) rebar.

Pipe Penetrations: The inlet and outlet are fitted with solid seals or a grout connection. All pipe penetrations are placed according to job requirements.

Pipe Stands: Adjustable height pipe stands will be provided to support assembly.

Sealant: Sealant used will meet or exceed ASTM C990.

Steps: Aligned under hatch unless specified.

General: Meter vaults are not water tight structures unless specified by Barger And Sons.

8' x 6' Meter Vault Smyrna Utility District

Date: 11.272017

Drawn By: Eric Barger

Approx. Vault Weight: 21,000 lbs.