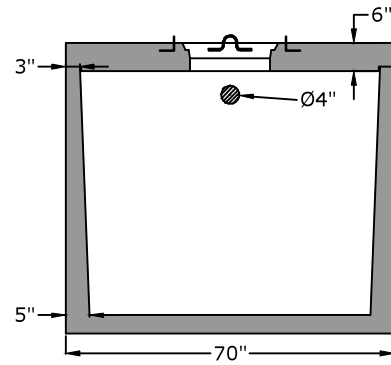
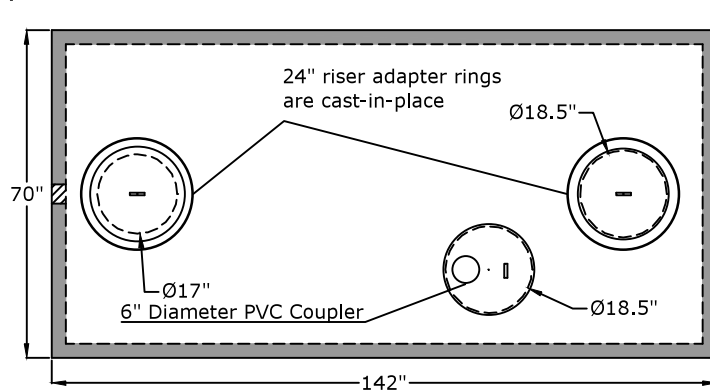
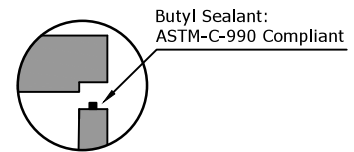
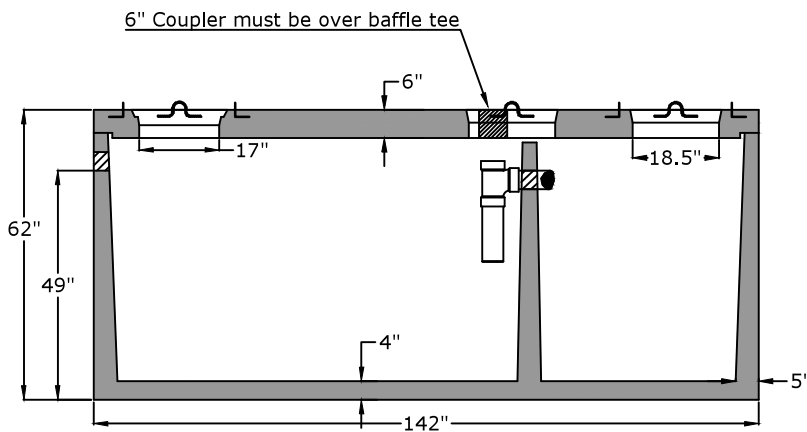


Top View



Side View



Approved for Production

Project: _____

Date: _____

Quantity: _____

By: _____

Specifications

Concrete: 5,000 psi minimum strength (28 day)

Reinforcing: Primary reinforcement will be rebar.

Riser Adapter Ring: Cast in place.

Sealant: Sealant used in the seam of the tank will meet or exceed ASTM C990.

Pipe Penetrations: Inlet and outlets are fitted with seals that meet or exceed all ASTM C923 specifications.

Partition Wall: The partition wall, if present, is poured monolithically.

Watertight: ASTM C 1227 latest revision. Tank must be tested within 3 working days of delivery.

Drawing: All measurements are accurate within ± 1 inch.

Warranty: See Terms and Conditions.

Five generations. One goal.
BargerAndSons.com
Quality precast concrete.

C.R. Barger & Sons, Inc.
P.O. Box 370 - Kingston TN 37763
Phone 888.882.5860 - BargerAndSons.com

Roane County Public Utility 1500 Pump Tank Standard Inlet Configuration

Date: 3.252013

Drawn By: EB

Approx. Vault Weight: 17,000 lbs.