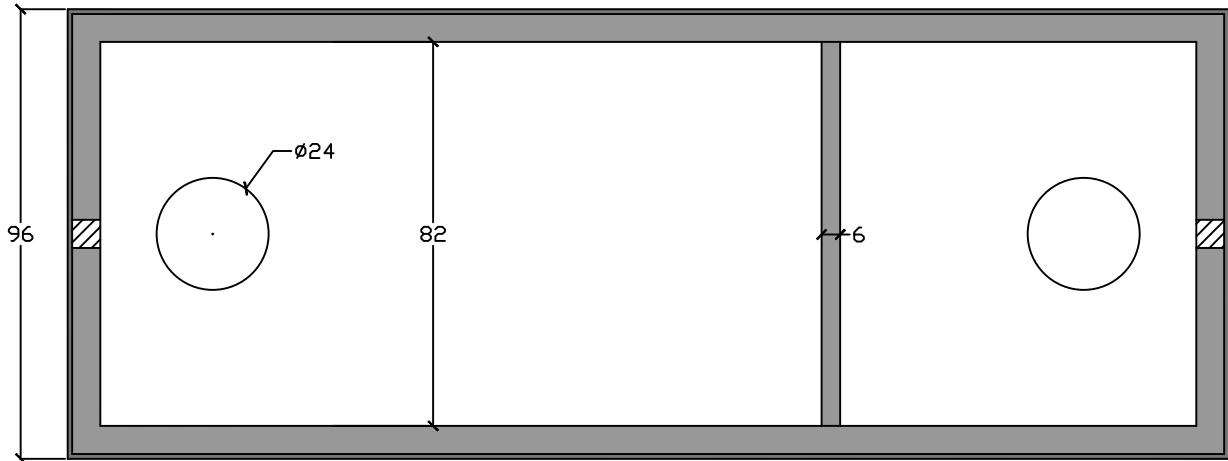
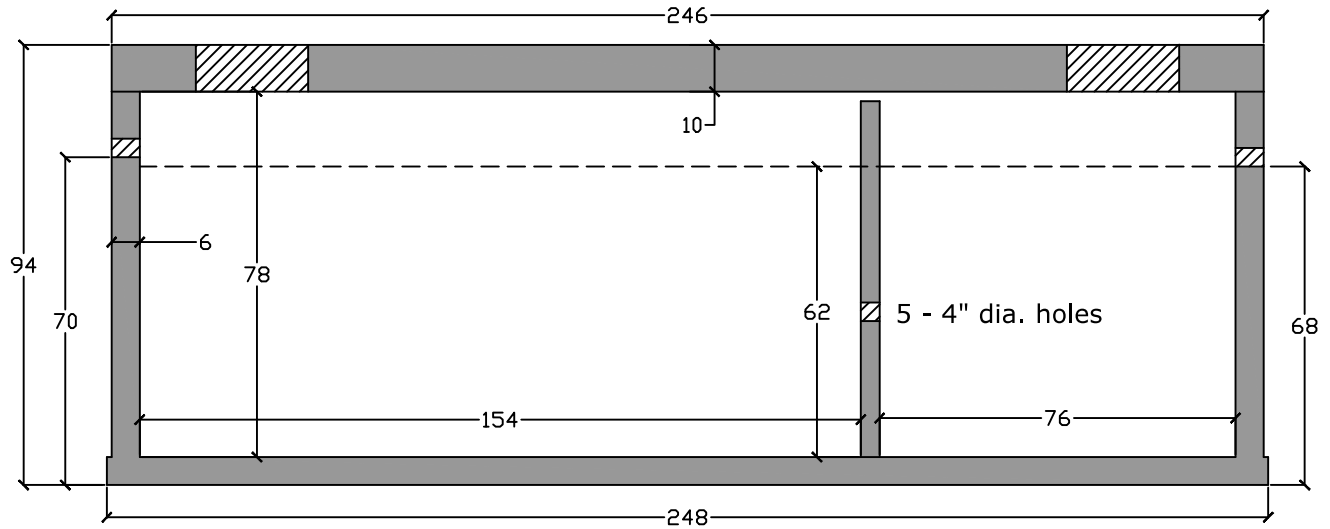


Top View



- A-16 (AASHTO HS20) traffic rated
- 4" inlet/outlet (standard)
- 2/3 - 1/3 compartment capacity
- Top - 21,000 lb
- Bottom - 44,000 lb

Side View



Specifications

Concrete: 5,000 psi minimum strength (28 day)
Reinforcing: Primary reinforcement will be rebar.
Risers: Grade rings and manhole frames and covers sold separately.
Sealant: Sealant used in the seam of the tank will meet or exceed ASTM C990.
Pipe Penetrations: Inlet and outlets are fitted with seals that meet or exceed all ASTM C923 specifications.
Partition Wall: The partition wall, if present, is poured monolithically.
Watertight: ASTM C 1227 latest revision. Tank must be tested within 3 working days of delivery.
Drawing: All measurements are accurate within ± 1 inch.

Tank Warranty: See Terms and Conditions.



C.R. Barger & Sons, Inc.
 P.O. Box 370 - Kingston TN 37763
 Phone 888.882.5860 - BargerAndSons.com

Installation: The tank hole is not to be more than 18 in. longer and wider than the tank. There shall be a minimum of 6" of 3/4" stone bedding. This tank is designed for HS20 traffic loads and with a backfill cover between 2' - 6'. Water table assumed at top of tank.

Septic Tank Traffic Rated HS20 5000 Gallon

Date: 4.012014

Drawn By: Eric Barger

Approx. Weight: See above